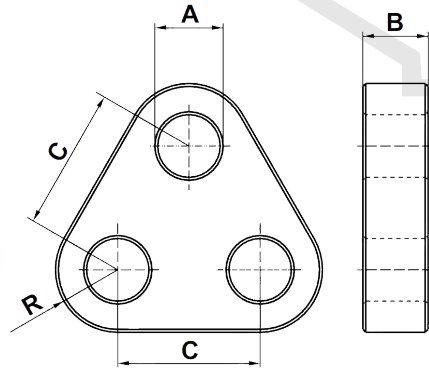
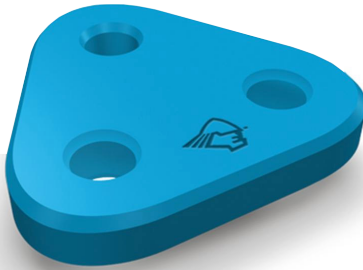


TRIANGULAR PLATE



S.w.l. tons	M.b.l. tons	A mm	B mm	C mm	R mm
25	125	55	50	150	85
35	175	60	60	160	95
55	275	75	80	210	120
85	425	90	90	230	160
120	600	105	110	280	190
150	750	115	130	320	205
175	875	115	130	320	230
200	1000	140	140	390	250
250	1250	150	160	390	280

All dimensions are approximate