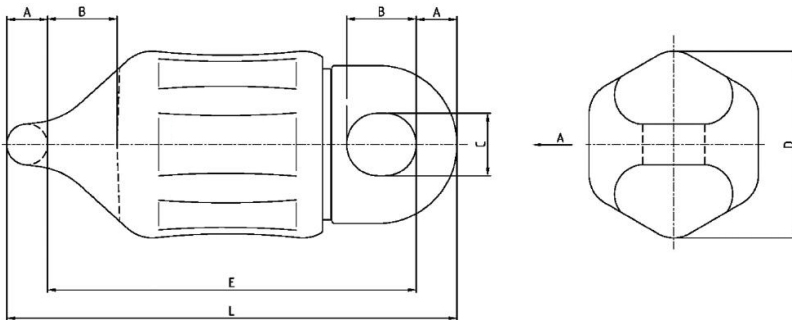


MOORLINK ANCHOR HANDLING SWIVEL

2.27

This Swivel is designed with hexagonal geometry, reducing the risk for uncontrolled rolling onboard an anchorhandler's deck. The section is also shaped to reduce point loading whilst running over the stern roller or on the wire drums. The Swivel is equipped with either maintenance free high grade bronze aluminium slide bearings or trust roller bearings. The design is optimised in order to reduce maintenance requirements. All MoorLink Anchor Handling Swivels are approved by the Certifying Authorities.



Type	120 v2	209
A (mm)	76	98
B (mm)	130	142
C (mm)	116	133
D (mm)	346	358
E (mm)	690	644
L (mm)	840	840
MBL (kN)	5000	7210

All dimensions are approximate