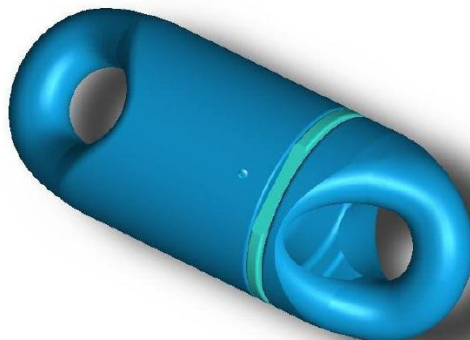


## MOORLINK ANCHOR CHAIN SWIVEL

The MoorLink Anchor Chain Swivels are supplied in either forged or cast versions. The structural design is thoroughly analysed by FEM-analysis and allows the swivel to run through a fairlead, chaser ring or over an anchor handler stern roller under high load, avoiding damage to the bearing system or any other swivel part. The bearing consists of a high grade, maintenance free bronze alloy slide bearing, moving over a polished stainless steel washer. All MoorLink Anchor Chain Swivels are approved by the major Certifying Authorities.



Type	177	185	193
A (mm)	80	91	95
B (mm)	130	142	148
C (mm)	133	133	133
D (mm)	358	358	358
E (mm)	640	644	715
L (mm)	820	840	919
Mbl (kN)	6001	7230	8120

All dimensions are approximate

