

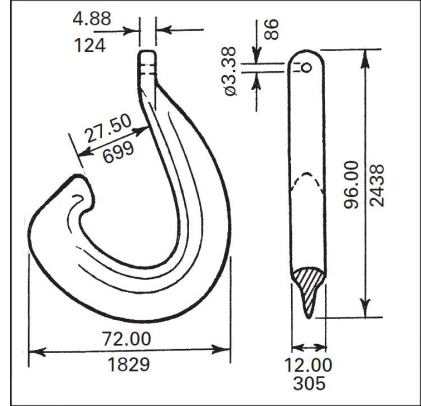
CHAINS AND FITTINGS

BEL 101 'J' CHAIN CHASER

3.2

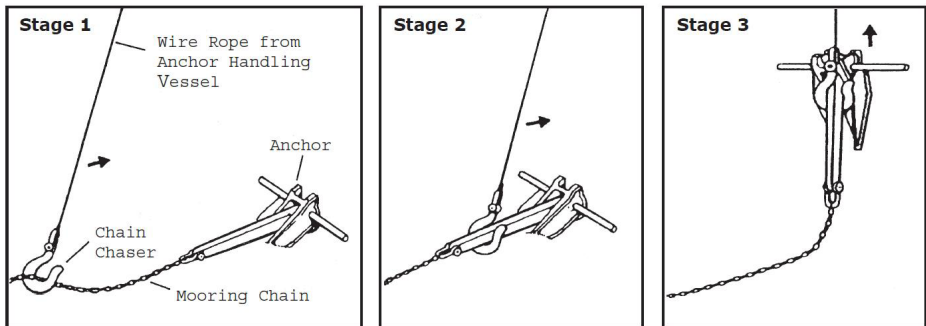


Safe Working Load: 100 tonnes
 Proof Test Load: 250 tonnes
 Weight: 1882 kg



Chain Chaser

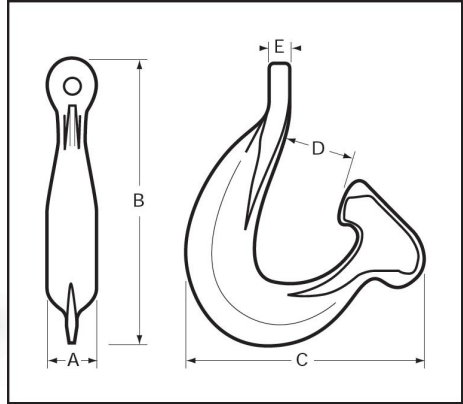
Chain chasers were developed to overcome the problems of recovering rig anchors when anchor pendant lines failed in service. The operational sequence of chasing is shown below.



BEL 4101 'J' CHAIN CHASER

Safe Working Load: 250 tonnes
 Proof Test Load: 400 tonnes
 Weight: 3170 kg

3.3



Type	Weight (kg)	SWL (tonnes)	Proof test (tonnes)	Dim	A	B	C	D	E
BEL 4101	3170	250	400	in	18	101.9	8.6	27.5	7.5
				mm	457	2565	2185	699	191

Material: BS EN 1563 Grade 450/10

All dimensions are approximate

'J' LOCK CHAIN CHASERS

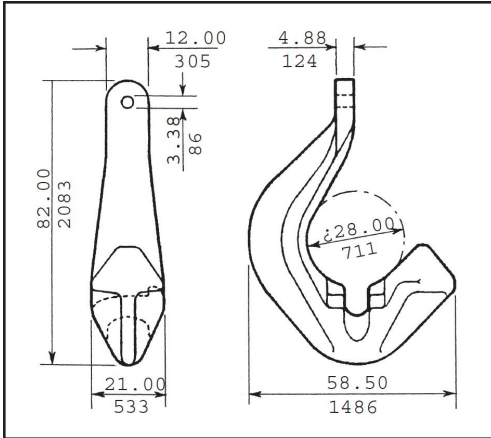
BEL 115/35-45

BEL 115/35 for chain 64mm to 90mm

BEL 115/45 for chain 95mm to 115mm

3.9

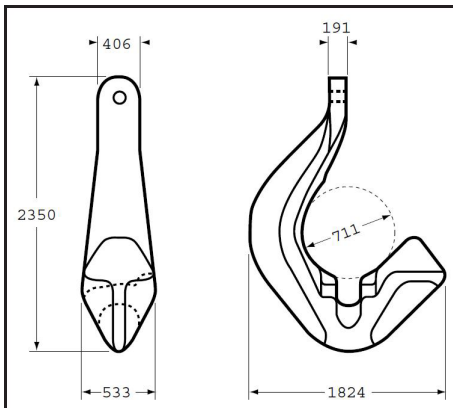
BEL 115/35



Safe Working Load: 100 tonnes
 Proof Test Load: 250 tonnes
 Weight: 1778 kg



BEL 115/45



Safe Working Load: 250 tonnes
 Proof Test Load: 400 tonnes
 Weight: 2950 kg